



Instructions and Information for use DELTASAFE® Particulate Respirator Series

See information supplied
by the manufacturer



Date of Issue: 13/08/2021

Version: 1

page: 1/2

DESCRIPTION

DELTASAFE® Particulate Respirator Series provide effective respiratory protection for workers exposed in dust and/or non-volatile liquid.

- Tested and CE Approved to EN 149:2001+A1:2009 PPE Regulation (EU)2016/425

Notified Body:

BSI Group The Netherlands B.V.-NB 2797
Say Building, JohnM Keynesplein 9, 1066 EP, Amsterdam, Netherlands

Declaration of conformity link:

<https://shop.delta-zofingen.ch/konformitaetserklaerungen>

Standards

These products meet requirement of European Standard EN149:2001 + A1:2009, filtering facepiece respirators for use against particles. They are intended to protect wearer from solid particles and/or non-volatile liquid only. Products are classified by filtering efficiency and maximum total inward leakage performance, and usability and clogging resistance.

Designations: R = Reusable, NR = Not Reusable, D = Meets the clogging resistance requirements

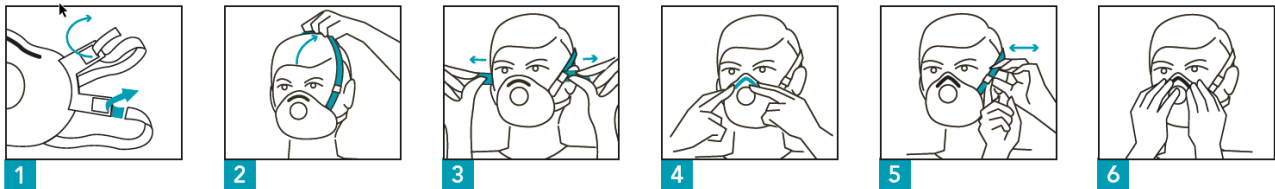
Applications

These respirators are sufficient to protect wearers from hazard of solid and non-volatile liquid particles in the following limits:

The respiratory protection is only effective when the respirator is properly worn throughout the time when the user is exposed to the targeted hazard.

Fitting Instructions

Before fitting device, ensure hands are clean. All respirator components should be inspected for damage prior to each use.



- Thread top elastic strap through top buckles. Repeat for bottom strap and buckles. Place the bottom elastic strap around the head just below the ears. Untwist the strap.
- Place the top elastic strap around the head, above the ears. Untwist the strap.
- Adjust tension by pulling tabs of each strap, as shown.
- Using both hands, mould metal nosepiece comfortably to shape of nose. Pinching the nosepiece using one hand may result in less effective respirator performance.
- Strap tension may be decreased without removing respirator from the head by pushing out on the back of the buckles.
- The seal of respirator on the face should be fit checked prior to wearing in the workarea.

Fit Check Procedure

- Cover the front of the respirator with both hands, being careful not to disturb the position of respirator.
- Inhale sharply. A negative pressure should be felt inside respirator. If any air leaks around the nose, readjust the nosepiece as described in step 4. If air leaks at the respirator edges adjust the position of the respirator and/or tension of the straps. Retest the seal. Repeat the procedure until the respirator is sealed properly.

If you cannot achieve a proper fit do not enter contaminated area. See your supervisor.

DELTA Zofingen AG

Untere Brühlstrasse 10 | CH-4800 Zofingen | Tel. +41 62 746 04 04 | Fax +41 62 746 04 02
sales@delta-zofingen.ch | delta-zofingen.ch | MWST-Nr.: CHE-102.309.785 MWST



Instructions and Information for use DELTASAFE® Particulate Respirator Series

See information supplied
by the manufacturer



Date of Issue: 13/08/2021

Version: 1

page: 2/2

Note:

1. Make sure every accessories is good before wearing.
2. If the mask is with valve, check valve before wearing.
3. While feeling hard breathing or dizzy, please leave the polluted area immediately.
4. If the mask respiratory resistance become worse, please change a new one.
5. Do not enter hazardous area until you have the mask properly fitted.
6. Do not use with beards or other facial hair that may inhibit contact between the face and the edge of the respirator.

Recyclable	No secondary use	Latex free	Maximum humidity of <80%	Do not expose to the sun	Store in clean, dry conditions within the temperature range of -20 to +30 °C

Storage and Transportation

The DELTASAFE® Respirator Series have a shelf life of 5 years. The respirators should be stored in clean, dry conditions within temperature range: -20 to + 30 Celsius degree, within maximum humidity of <80%. The product should be intact in the original package when stored or transported.

WARNING

1. Always confirm the respirator is
 - Suitable for the application
 - Fitted with the face
 - Properly worn throughout the period of exposure
 - First-time use
 - Not expired by the expiration date showed on package
2. These products do not protect against gases/vapors.
3. The particle filtering half mask marked with NR shall not be used for more than one shift (8 hours).
4. Leave the contaminated area if
 - Breathing becomes difficult
 - Dizziness or Stress
5. Do not use with beard or other facial hair that may degrade a good seal on face.
6. Do not attempt to use the product in condition of less than 19.5% oxygen, or anywhere oxygen percentage is unknown
7. Do not use when concentrations of contaminants are immediately dangerous to health or life.
8. Do not use in the explosive environment.
9. Discard and replace the respirator if it becomes damaged or difficult to breath.
10. Do not attempt to modify, clean or repair the respirator.
11. Sufficient training, education, and appropriate maintenance are strongly recommended prior to use.
12. Failure to follow the instructions on the use may seriously harm users' health.
13. Please consult your supervisor or us for any questions related!